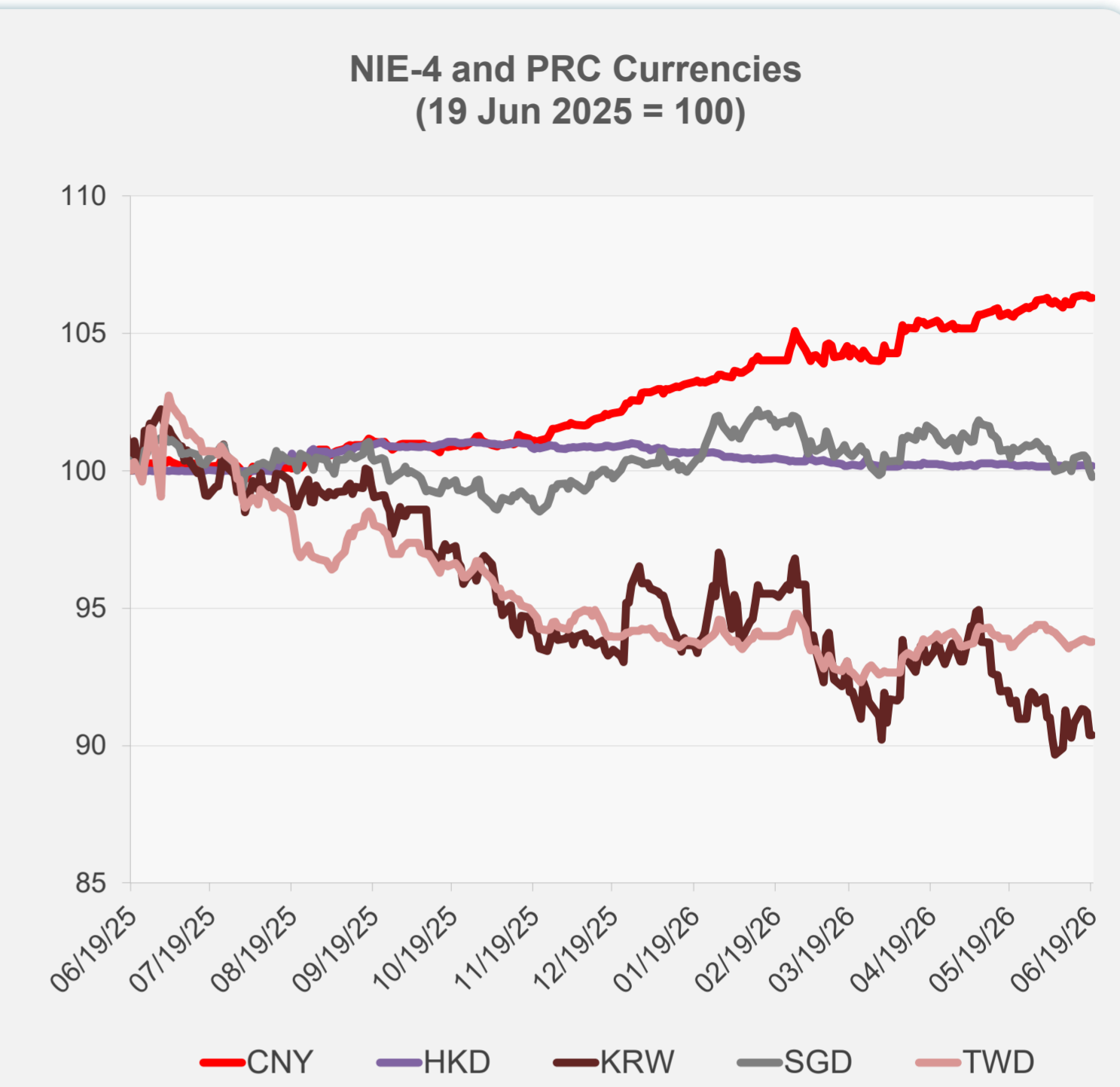
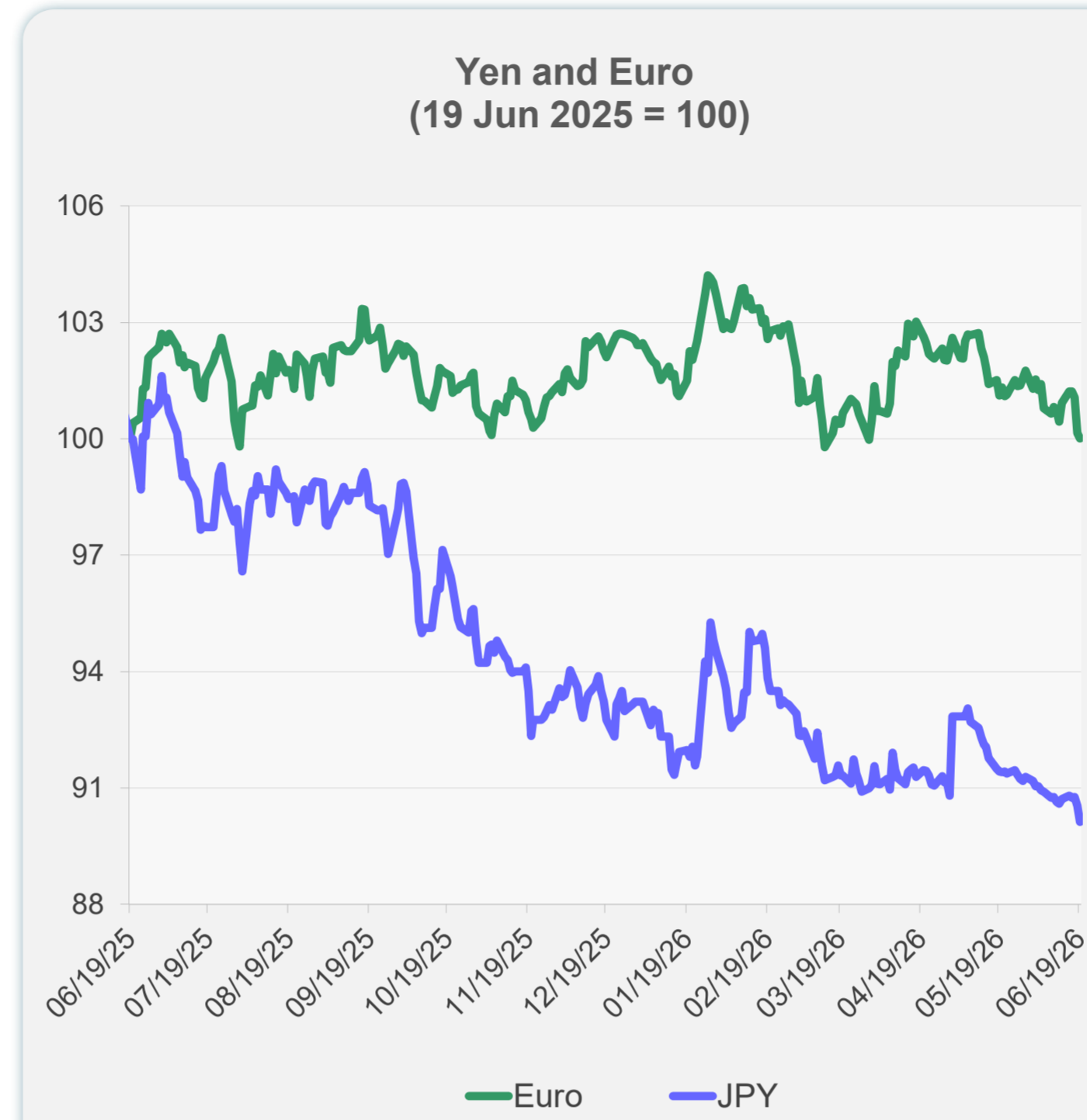
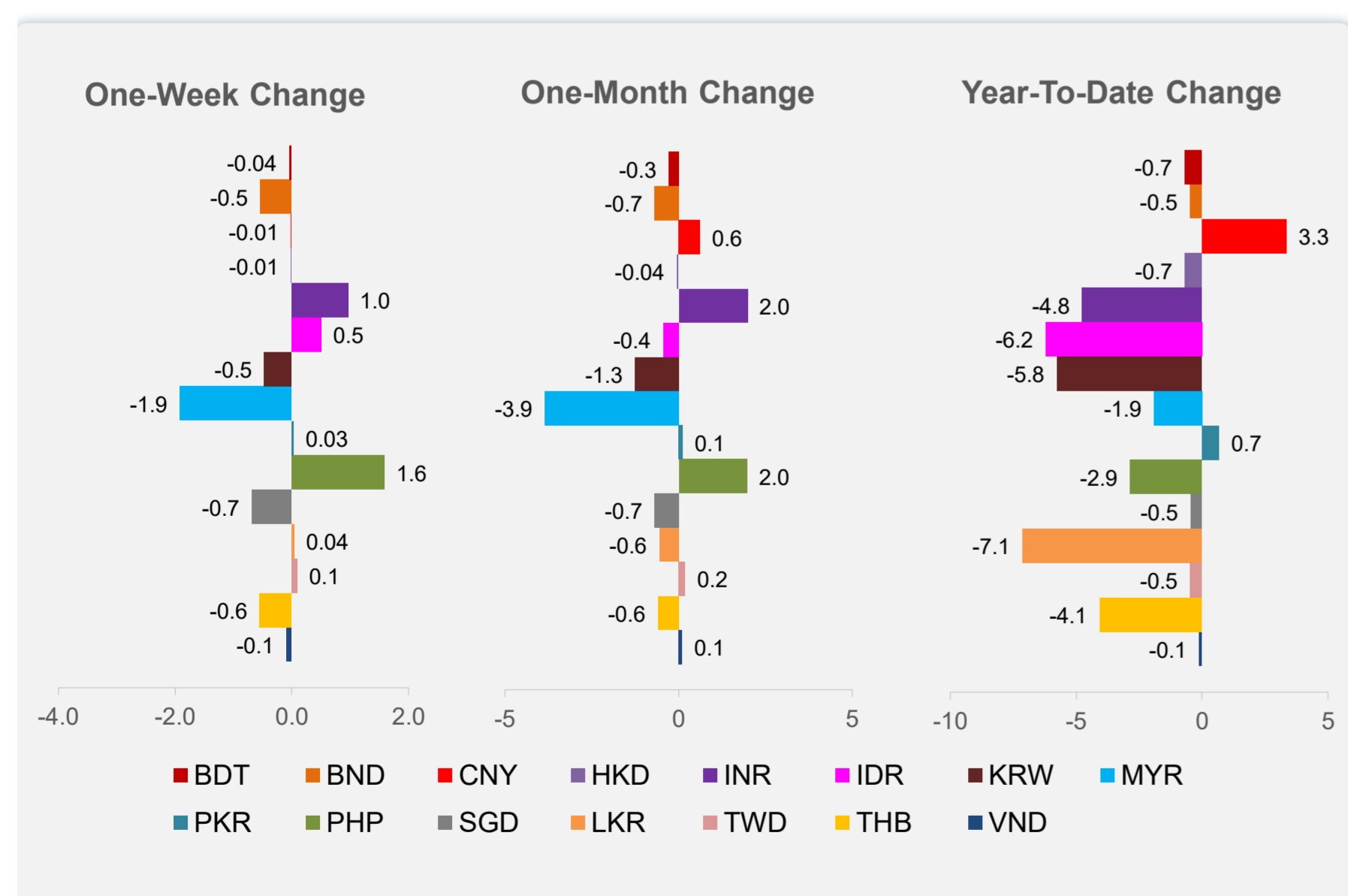
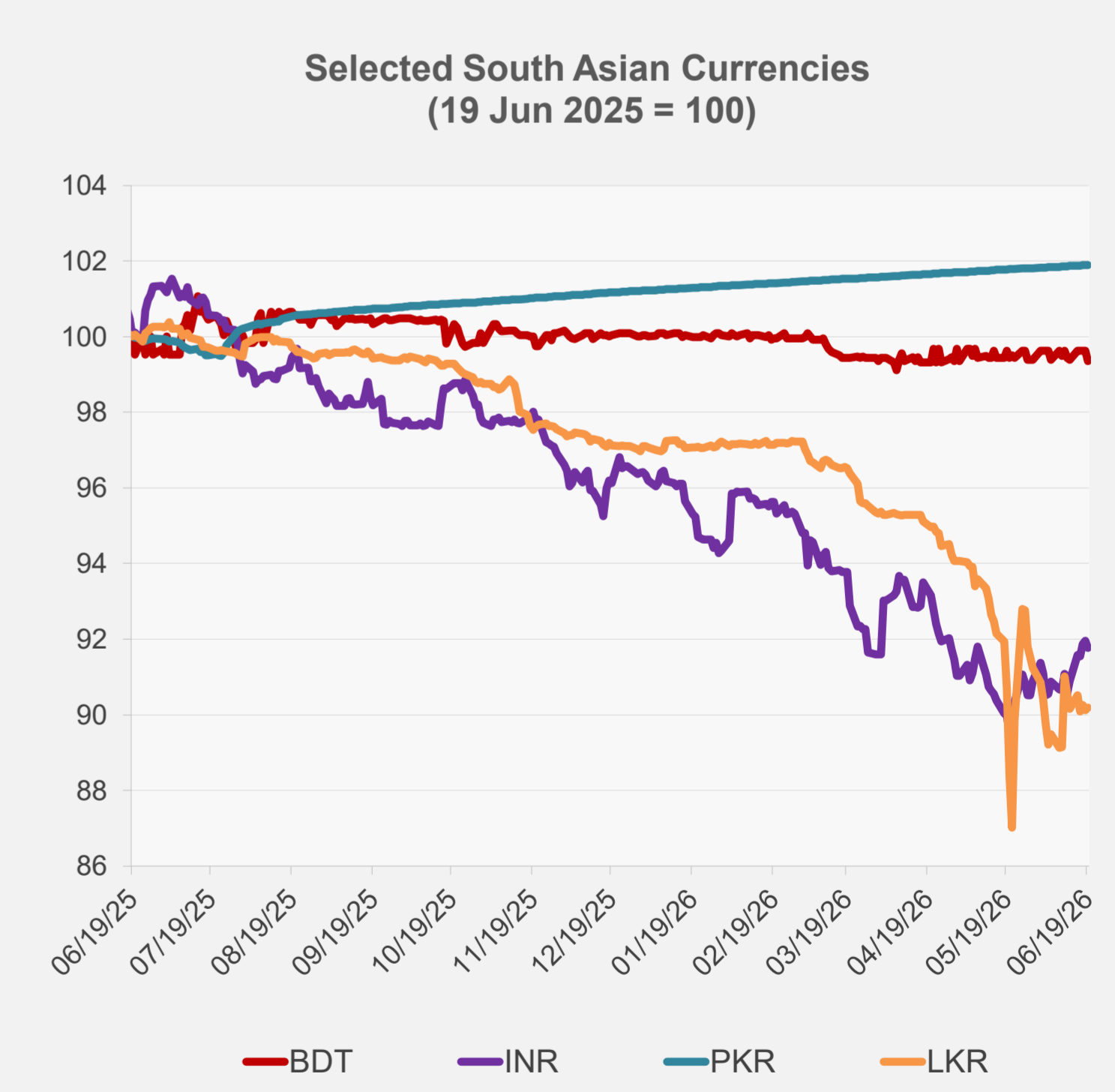
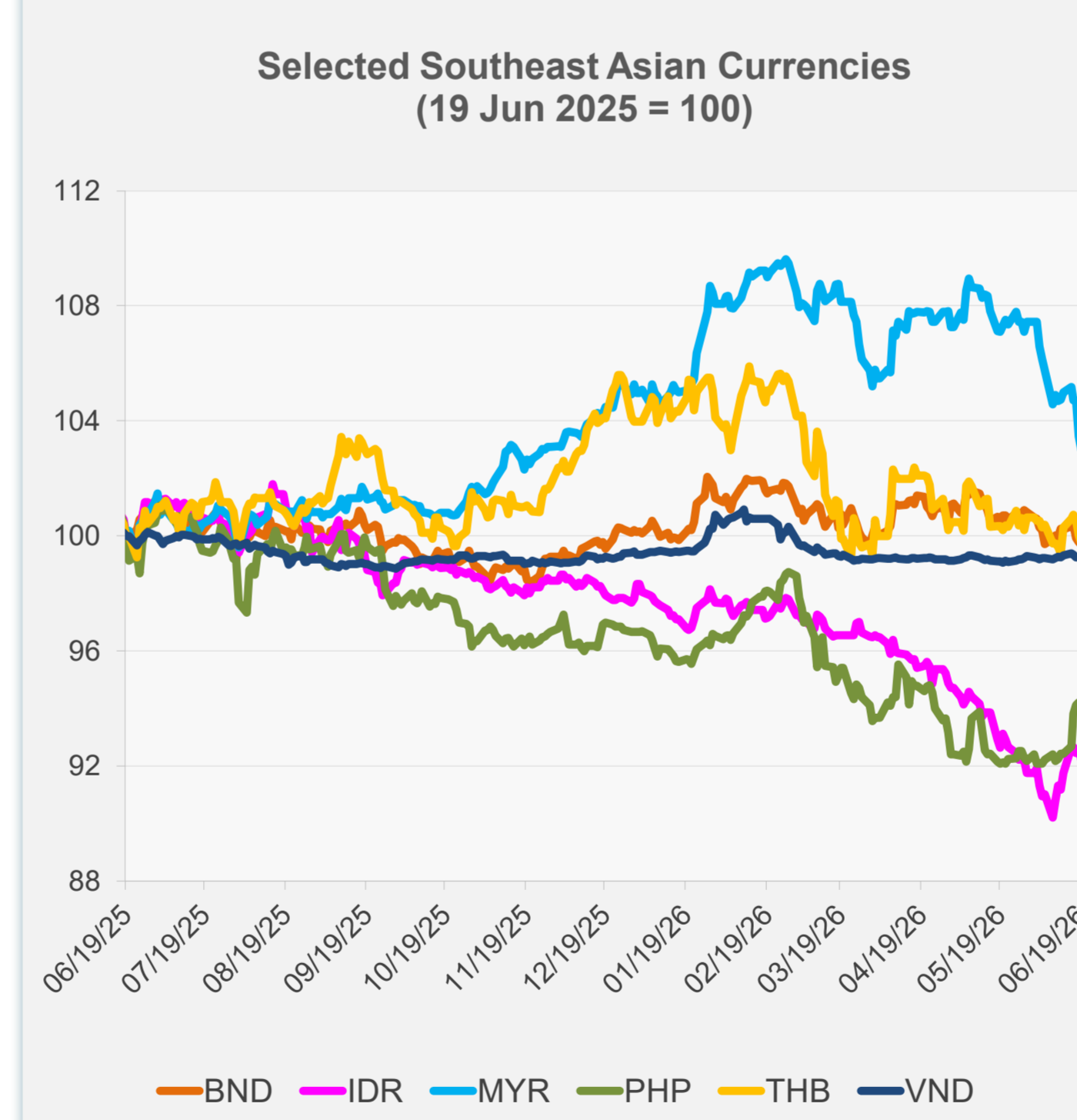


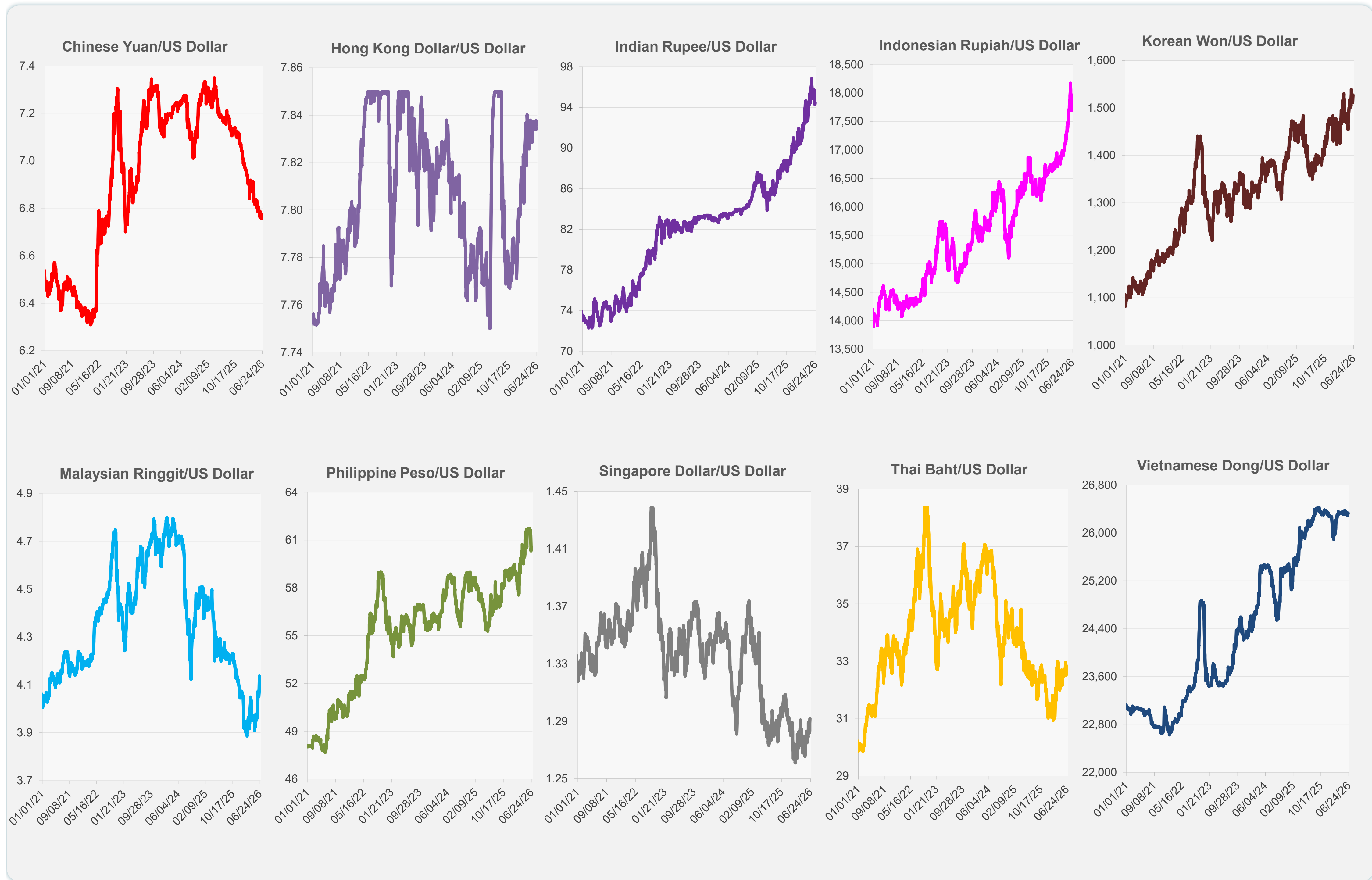
	Latest Closing	% change from Previous Day	% change from 01-Jan-26
Euro	0.87	-0.14	-2.34
Japanese yen (JPY)	161.32	-0.45	-3.31
Bangladeshi taka (BDT)	123.10	-0.28	-0.69
Brunei dollar (BND)	1.29	-0.09	-0.48
Chinese yuan (CNY)	6.76	0.00	3.35
Hong Kong dollar (HKD)	7.84	0.02	-0.67
Indian rupee (INR)	94.47	-0.21	-4.76
Indonesian rupiah (IDR)	17,780.00	-0.42	-6.21
Korean won (KRW)	1,527.00	0.01	-5.76
Malaysian ringgit (MYR)	4.14	-0.47	-1.91
Pakistan rupee (PKR)	278.22	0.01	0.68
Philippine peso (PHP)	60.54	-0.34	-2.86
Singapore dollar (SGD)	1.29	-0.25	-0.46
Sri Lanka rupee (LKR)	333.38	0.07	-7.13
Taipei,China NT dollar (TWD)	31.59	0.00	-0.47
Thai baht (THB)	32.84	-0.28	-4.07
Vietnamese dong (VND)	26,331.00	-0.02	-0.12



NIE = Newly Industrialized Economies



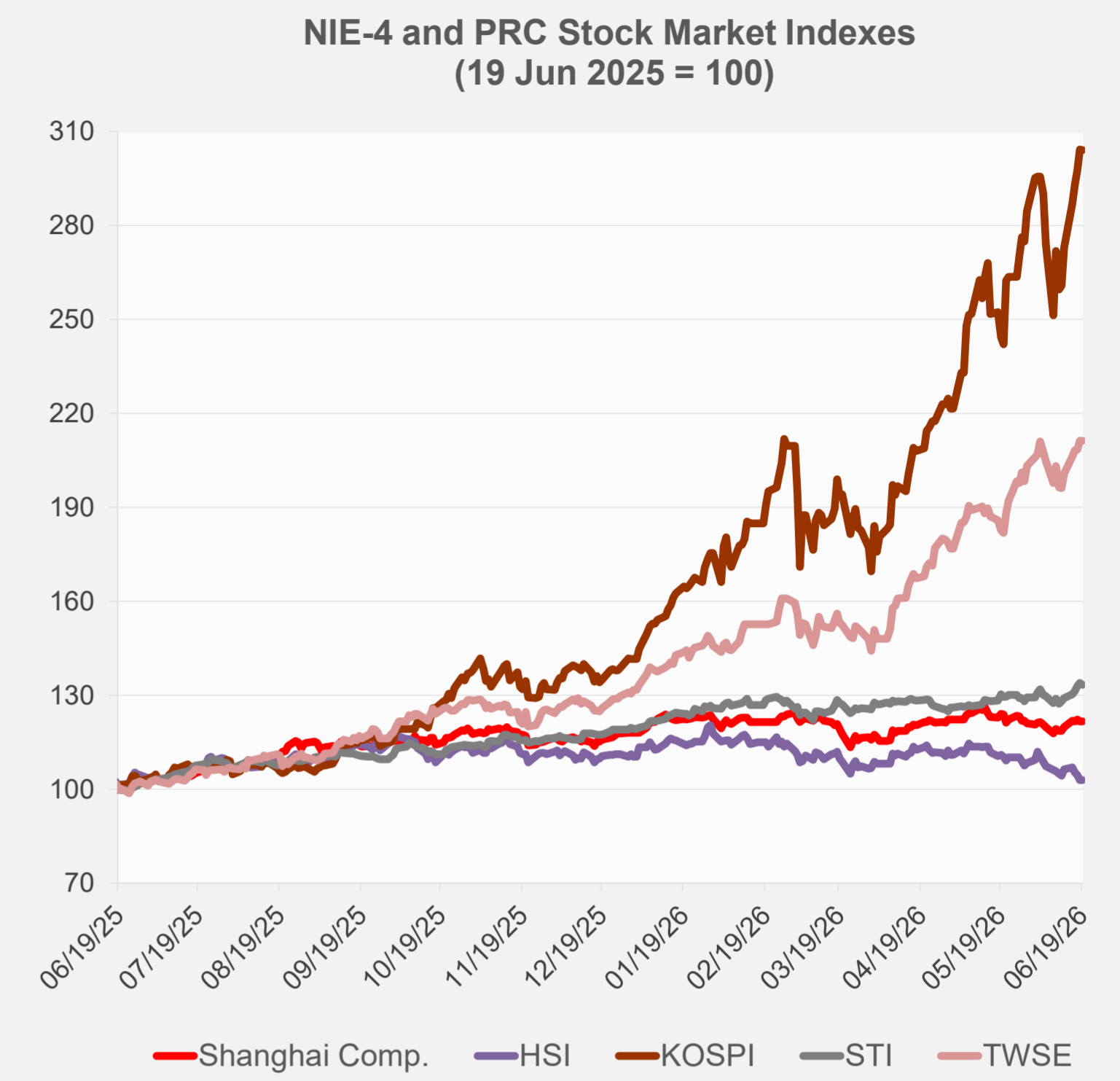
Note: Negative/Decreasing values indicate depreciation of local currency, and positive/increasing values indicate appreciation.  
Source: ADB calculations using data from Bloomberg and Haver Analytics.



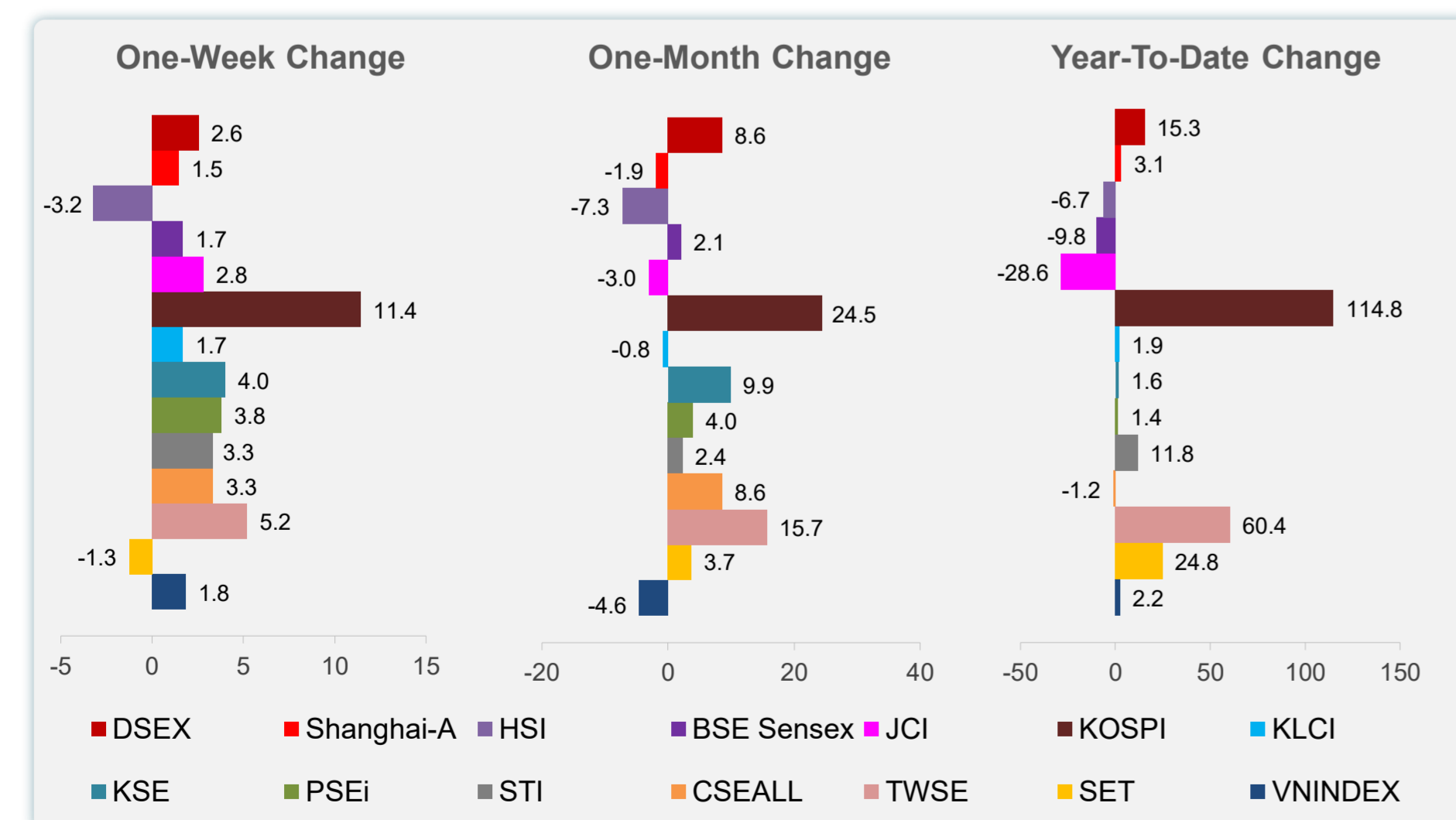
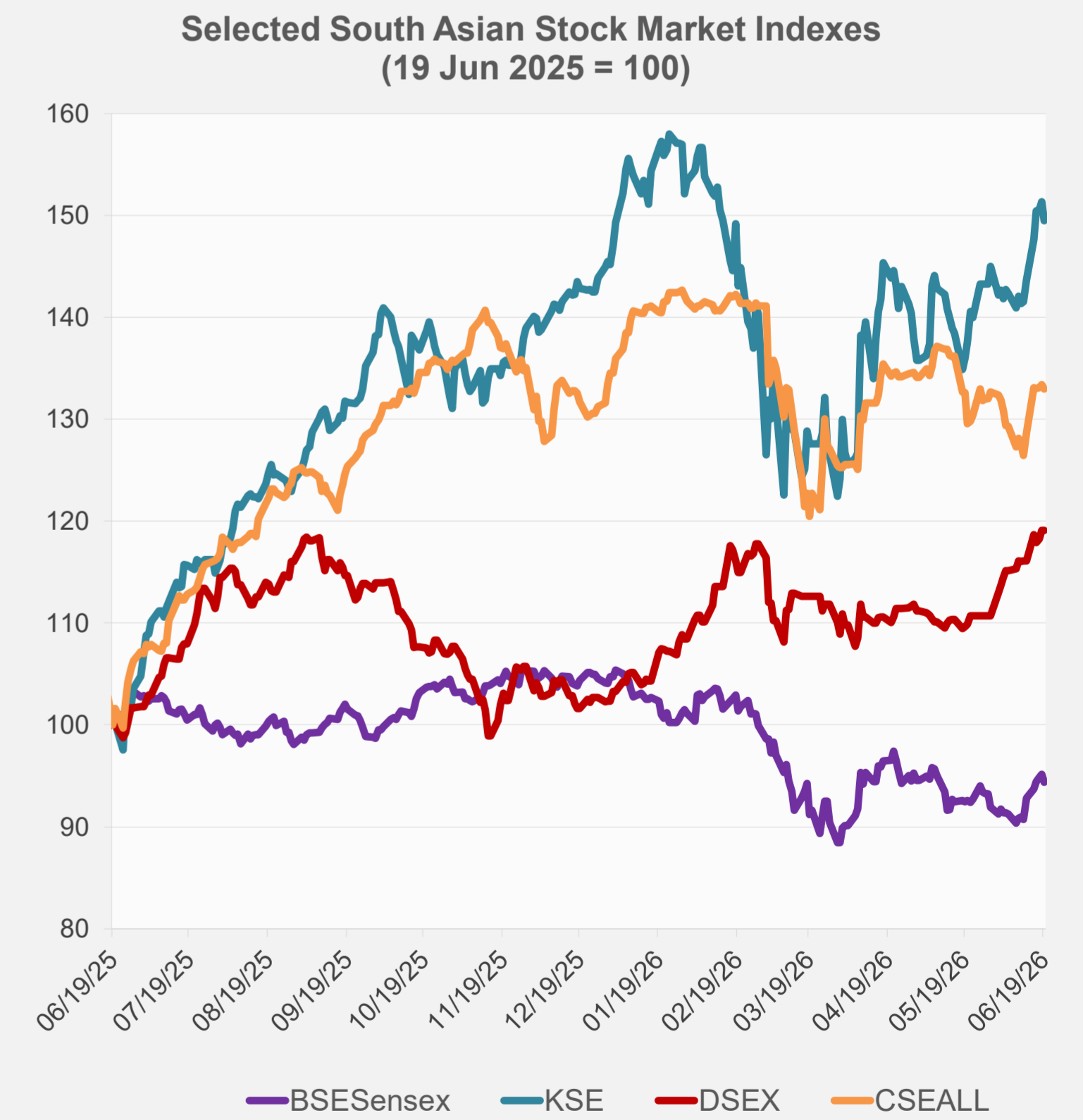
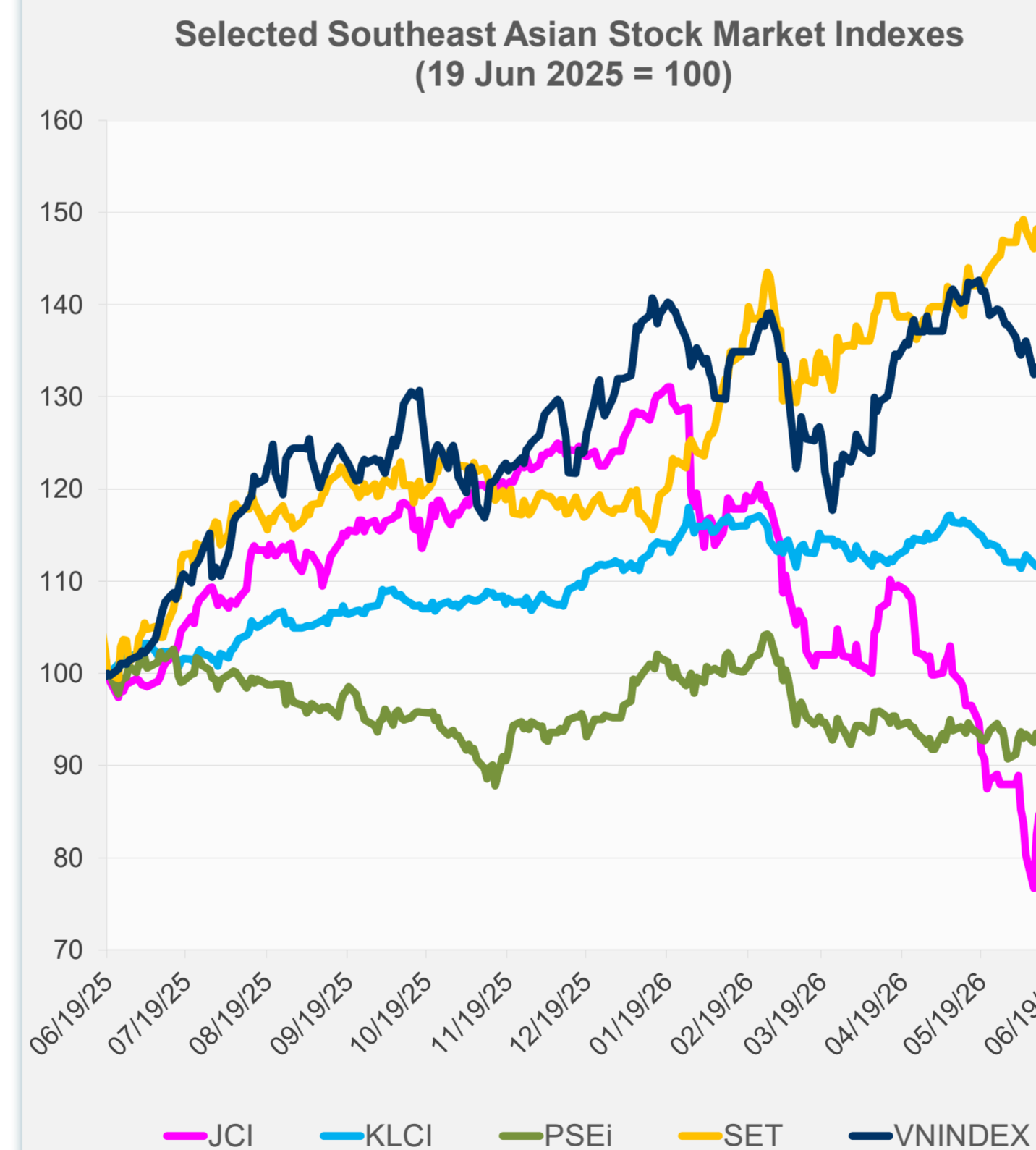
Source: Haver Analytics.

Daily Market Watch  
**STOCK INDEXES**

	Latest Closing	% change from Previous Day	% change from 01-Jan-26
US Dow Jones Ind Avg	51,564.70	0.00	7.28
US NASDAQ	26,517.93	0.00	14.09
US S&P 500	7,500.58	0.00	9.57
UK FTSE 100	14,734.50	-0.63	30.84
EURO STOXX 50	6,293.13	-0.48	8.66
Japan NIKKEI 225	71,250.06	0.28	41.54
Bangladesh DSEX	5,661.38	0.00	15.29
PRC Shanghai Comp.	4,090.48	0.00	3.06
Hong Kong, China HSI	23,924.81	0.00	-6.66
India BSE Sensex	76,802.90	-0.78	-9.84
Indonesia JCI	6,177.14	0.08	-28.56
Korea, Rep. of KOSPI	9,052.42	-0.13	114.81
Malaysia KLCI	1,712.03	0.04	1.90
Pakistan KSE 100	179,330.90	-1.24	1.62
Philippines PSEi	6,135.35	-0.30	1.36
Singapore STI	5,192.70	-0.39	11.76
Sri Lanka CSEALL	22,361.31	-0.33	-1.16
Taipei, China TWSE	46,465.20	0.00	60.43
Thailand SET	1,572.50	-0.79	24.83
Viet Nam VNINDEX	1,824.53	-0.32	2.24



NIE = Newly Industrialized Economies



Sources: ADB calculations using data from Bloomberg and CEIC Data Company.

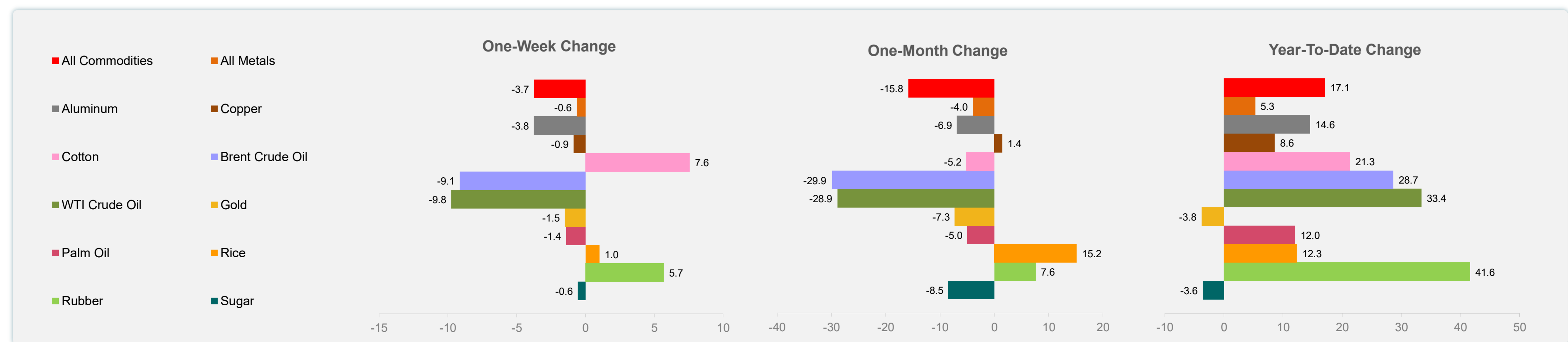
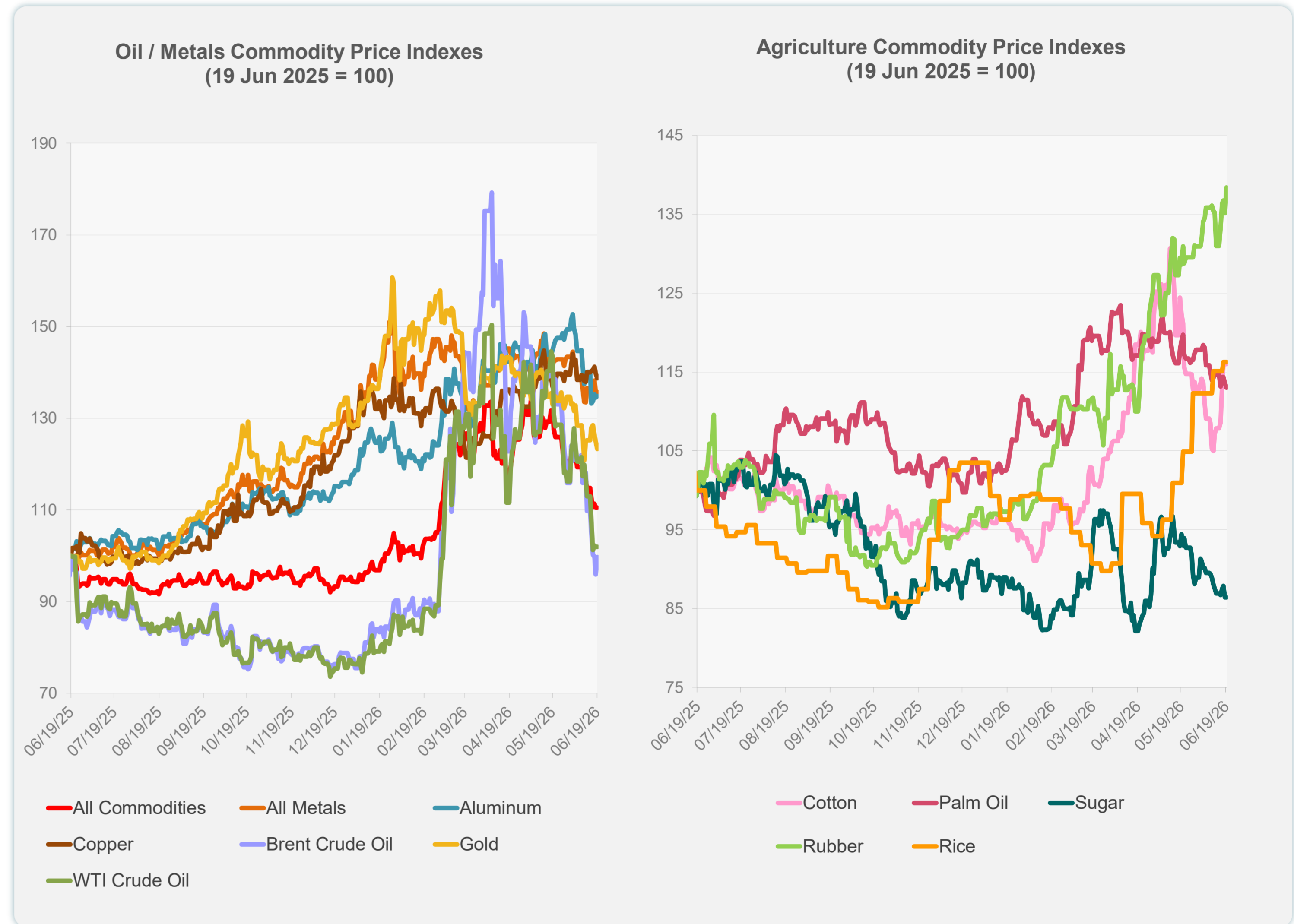


Sources: ADB calculations using data from Bloomberg and CEIC Data Company.

Daily Market Watch  
**COMMODITY PRICES**

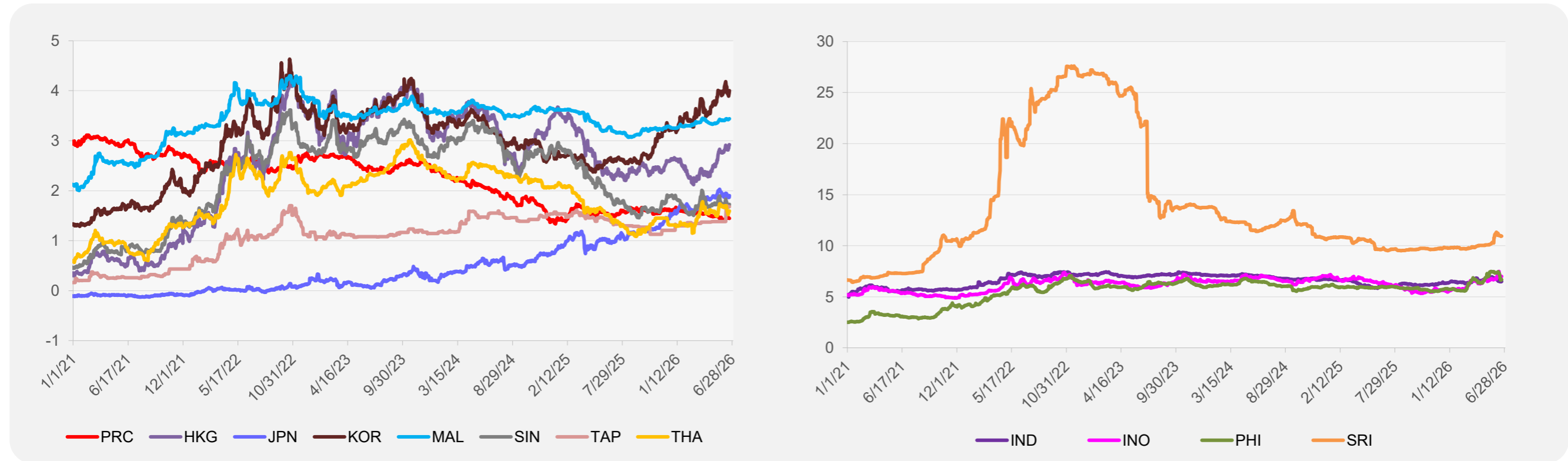
	Unit	Latest Closing	% change from Previous Day	% change from 01-Jan-26
S&P All Commodities	US\$	642.20	0.00	17.08
S&P All Metals	US\$	467.30	0.00	5.30
Aluminum	US\$/metric ton	3,400.22	0.29	14.56
Copper	US\$/metric ton	13,526.62	-0.72	8.62
Cotton	US cents/lb	75.24	0.00	21.32
Brent Crude Oil	US\$/barrel	80.34	3.93	28.66
WTI Crude Oil	US\$/barrel	76.60	0.00	33.40
Gold	US\$/troy oz	4,155.71	-1.29	-3.79
Palm Oil	US\$/metric tonne	1,085.15	-0.47	12.03
Rice <sup>1</sup>	US\$/metric ton	501.00	0.00	12.33
Rubber <sup>2</sup>	US\$/kg	304.50	2.42	41.63
Sugar	US cents/lb	14.26	0.00	-3.58

<sup>1</sup> Latest closing price from 17 June 2026.  
<sup>2</sup> Singapore Exchange, Ribbed Smoked Sheet Rubber.

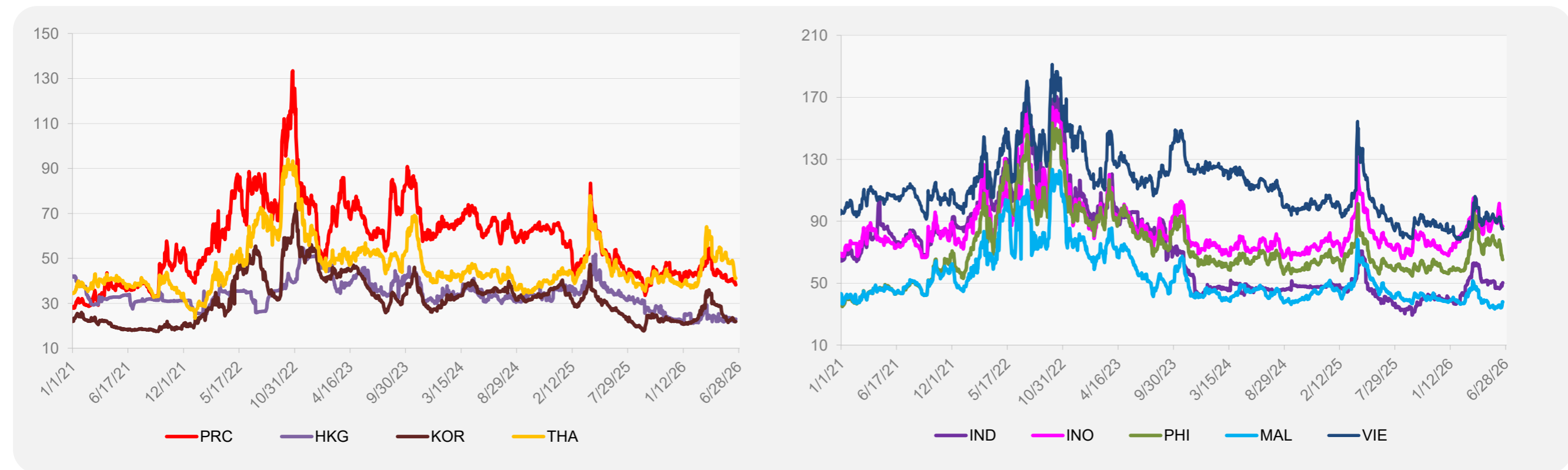


Source: ADB calculations using data from Bloomberg.

### 5-YEAR LOCAL CURRENCY GOVERNMENT BOND YIELDS (%)



### 5-YEAR CREDIT DEFAULT SWAP<sup>1</sup>



<sup>1</sup> In USD and based on sovereign bonds.  
Source: ADB calculations using data from Bloomberg.